

■ Features

1. Power consumption reduced by 75%.
2. Effectively reduce the temperature rise of the coil and improve the service life of the solenoid valve.
3. Stainless steel SUS316 body for corrosion resistance.



■ How to order

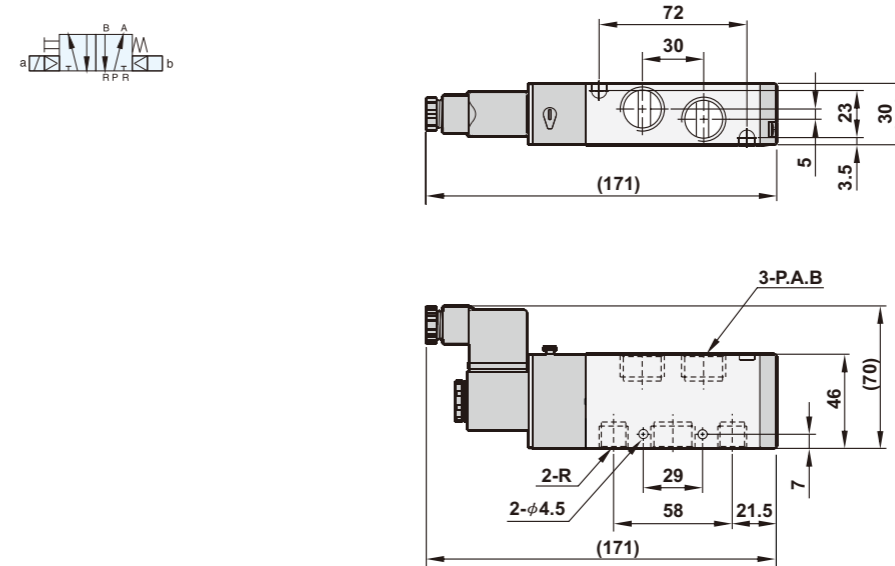
| | | | | | | |
|----------------------|-----------|-----------|---------------------|-----------|-------------|----------|
| E-SPU520 - 02 | N | - | S | 7 | - | L |
| 5/2 Way | Port size | Thread | Solenoid | Voltage | Led | |
| | 02 : 1/4" | Blank : G | S : Single solenoid | 7 : 12VDC | L : W/I LED | |
| | 03 : 3/8" | N : NPT | D : Double solenoid | 9 : 24VDC | | |
| | 04 : 1/2" | R : Rc | | | | |

■ Specifications

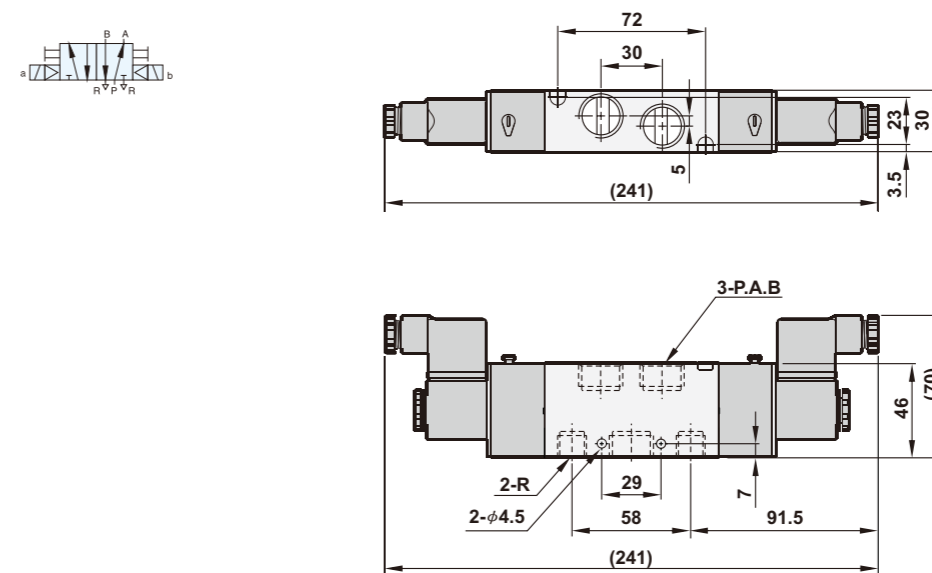
| Model | E-SPU520-02-S | E-SPU520-03-S | E-SPU520-04-S | E-SPU520-02-D | E-SPU520-03-D | E-SPU520-04-D |
|--------------------------|---------------------------|-------------------|---------------|-------------------|-------------------|---------------|
| Port size | 1/4" | 3/8" | 1/2" | 1/4" | 3/8" | 1/2" |
| Body material | SUS316 | | | | | |
| Effective area | 35mm ² | 65mm ² | | 35mm ² | 65mm ² | |
| Fluid | Compressed air | | | | | |
| Acting | Internal pilot | | | | | |
| Operating pressure range | 1.5~8 kgf/cm ² | | | | | |
| Proof pressure | 9.99 kgf/cm ² | | | | | |
| Ambient temperature | -10℃ ~ 60℃ | | | | | |
| Insulation class | F | | | | | |
| Temperature class | EEXmIIT4 | | | | | |
| Duty cycle | 100% ED | | | | | |
| Voltage tolerance | ±10% | | | | | |
| Protection class | IP65 (EN 60529) | | | | | |
| Standard voltage | 12VDC, 24VDC | | | | | |
| Net weight | 1000g | | | 1200g | | |

■ Dimensions

E-SPU520-02,03,04-S



E-SPU520-02,03,04-D



| Model | A | B | P | R |
|-------------|-----|-----|-----|-----|
| E-SPU520-02 | 1/4 | 1/4 | 1/4 | 1/4 |
| E-SPU520-03 | 3/8 | 3/8 | 3/8 | 3/8 |
| E-SPU520-04 | 1/2 | 1/2 | 1/2 | 3/8 |