

E-PS Series

Features

1. Power consumption reduced by 75%.
2. Effectively reduce the temperature rise of the coil and improve the service life of the solenoid valve.
3. ISO 1, ISO 2 solenoid valve.
4. Aluminum alloy body.
5. With single sub base and manifold sub-base which are identical to ISO 1 & ISO 2 standard.



How to order

E-PS520	F	-	02	N	-	S	7	-	L
5/2 Way	Sub-Base		Port size	Thread		Solenoid	Voltage		Led
	Blank : W/O base F : W/I single sub-base M02 : 2 Valves stack M03 : 3 Valves stack Mxx : xx Valves stack		02 : ISO 1 03 : ISO 2 04 : ISO 2	Blank : G N : NPT R : Rc		S : Single solenoid D : Double solenoid	7 : 12VDC 9 : 24VDC		L : W/I LED

How to order manifold

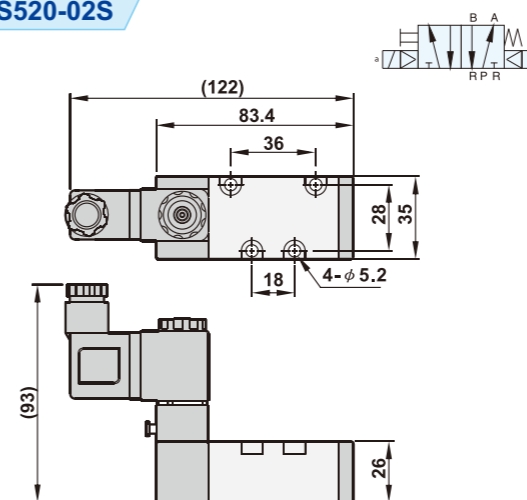
ZESF	-	02	ZEPS520B	-	02	ZEPS520E	-	02
Single sub-base		Port size	Manifold sub-base		Port size	End plate		Port size
		02 : 1/4" (ISO 1) 03 : 3/8" (ISO 2) 04 : 1/2" (ISO 2)			02 : 1/4" (ISO 1) 03 : 3/8" (ISO 2)			02 : 3/8" (ISO 1) 03 : 1/2" (ISO 2)

Specifications

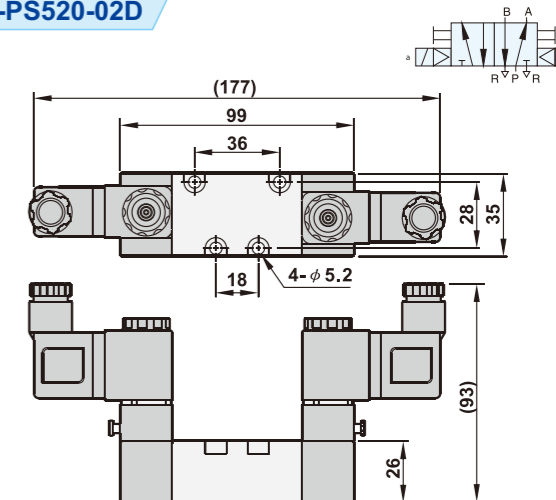
Model	E-PS520-02-S	E-PS520-02-D	E-PS520-03-S	E-PS520-03-D
Port size	1/4"		3/8" (1/2")	
Body material	Aluminum alloy			
Effective area	29mm ²		62mm ²	
Fluid	Compressed air			
Acting	Internal pilot			
Operating pressure range	1.5 ~ 8 kgf/cm ²			
Proof pressure	9.9 kgf/cm ²			
Ambient temperature	-10°C ~ 60°C			
Duty cycle	100% ED			
Coil type	DIN			
Protection class	IP65 (DIN 40 050)			
Insulation class	F			
Voltage tolerance	±10%			
Standard voltage	12VDC, 24VDC			
Net weight (W/I base)	320g (500g)	460g (640g)	700g (980g)	840g (1120g)

Dimensions

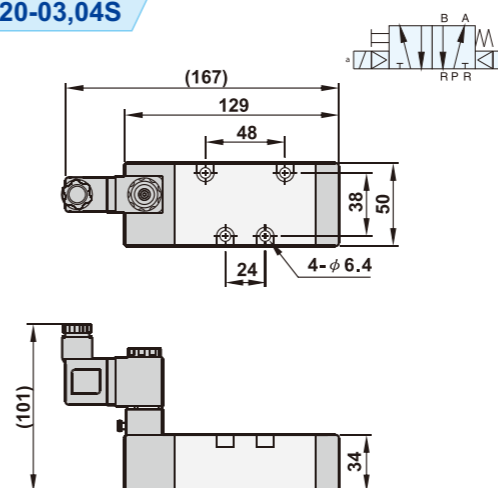
E-PS520-02S



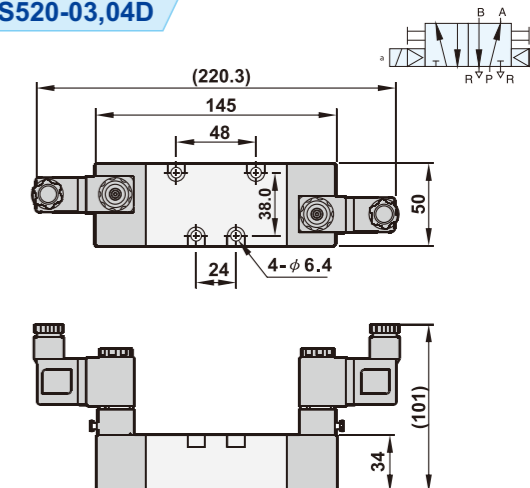
E-PS520-02D



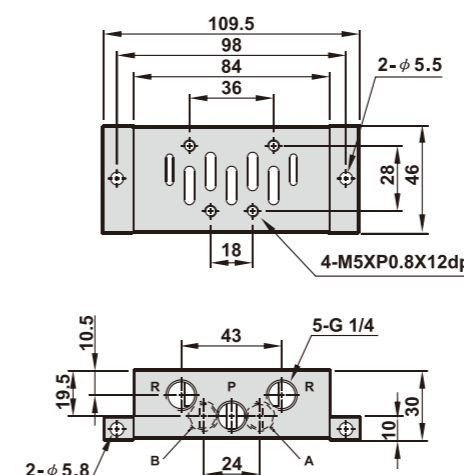
E-PS520-03,04S



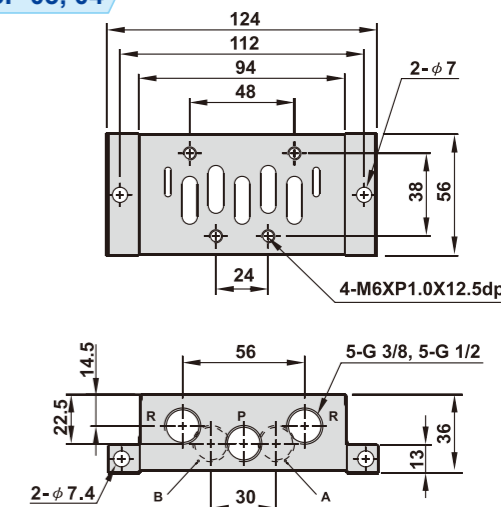
E-PS520-03,04D



ZESF-02

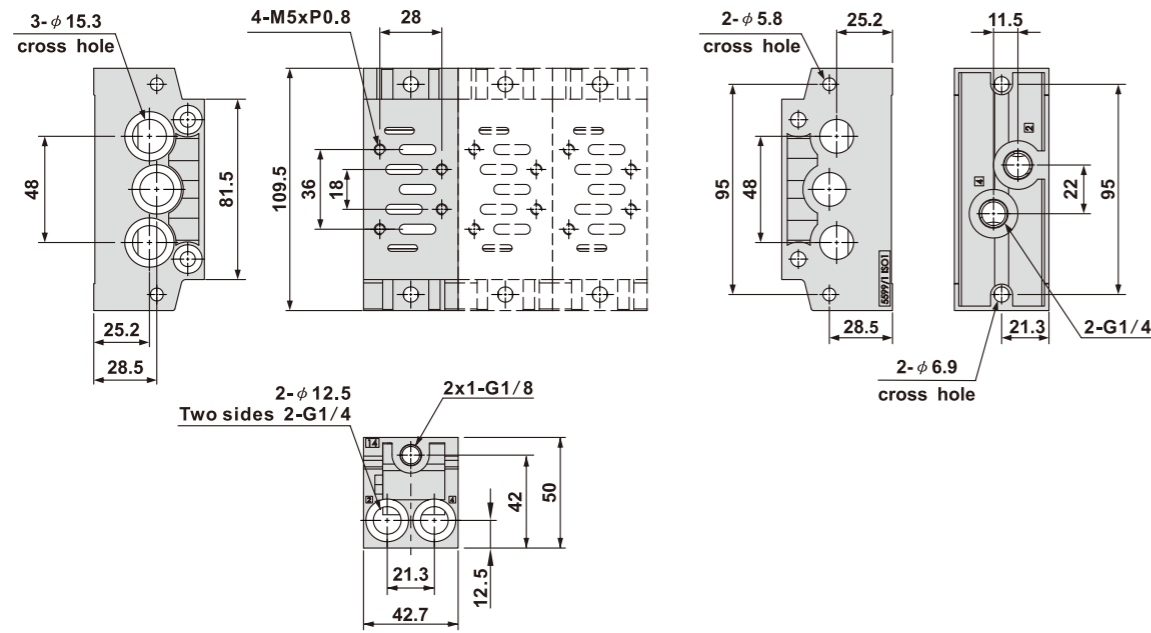


ZESF-03, 04

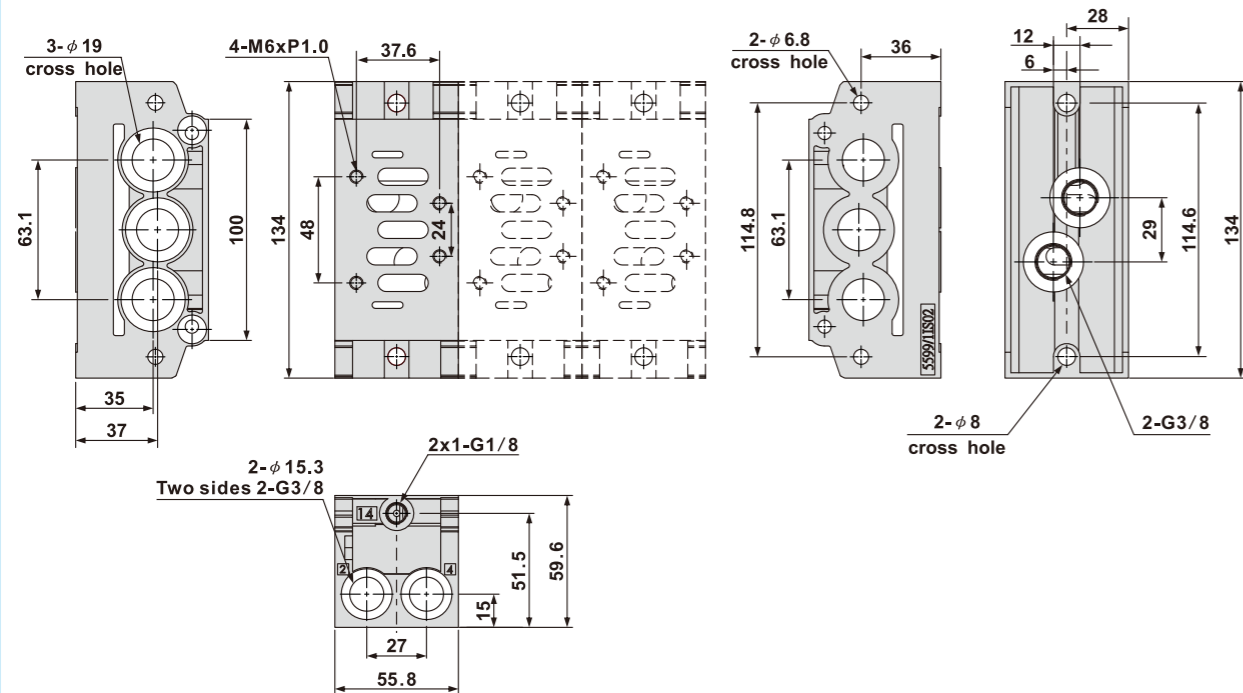


■ Dimensions

ZEPS520B-02 (ISO1 Manifold sub-base)

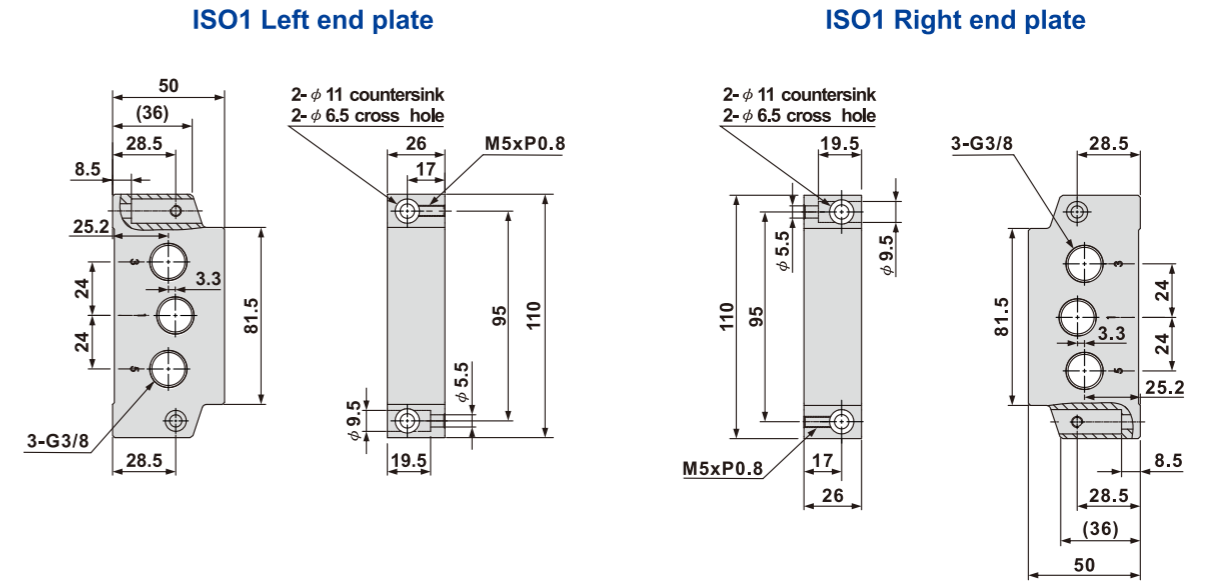


ZEPS520B-03 (ISO2 Manifold sub-base)



■ Dimensions

ZEPS520E-02 (ISO1 End plate)



ZEPS520E-03 (ISO2 End plate)

