

Features

1. Power consumption reduced by 75%.
2. Effectively reduce the temperature rise of the coil and improve the service life of the solenoid valve.
3. Lockable manual override for easy operation.
4. Anodized aluminum body and strict quality control provide a long durability.



How to order

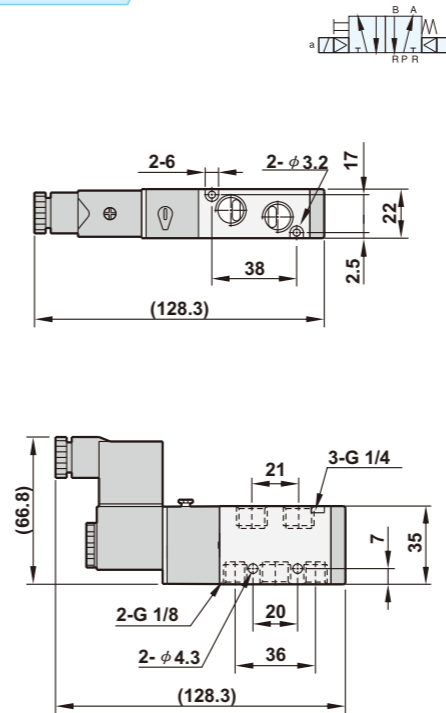
E-BM520	X	-	02	N	-	S	7	-	L
520: 5/2 Way	Acting style		Port size	Thread		Solenoid	Voltage		Led
530: 5/3 Way	Blank: Standard		02: 1/4"	Blank: G		S: Single solenoid	7: 12VDC		L: W/I LED
	5/3 Way		03: 3/8"	N :NPT		D: Double solenoid	9: 24VDC		
	Blank: Closed center		04: 1/2"	R :Rc					
	X : Exhaust center								
	Y : Pressurized center								

Specifications

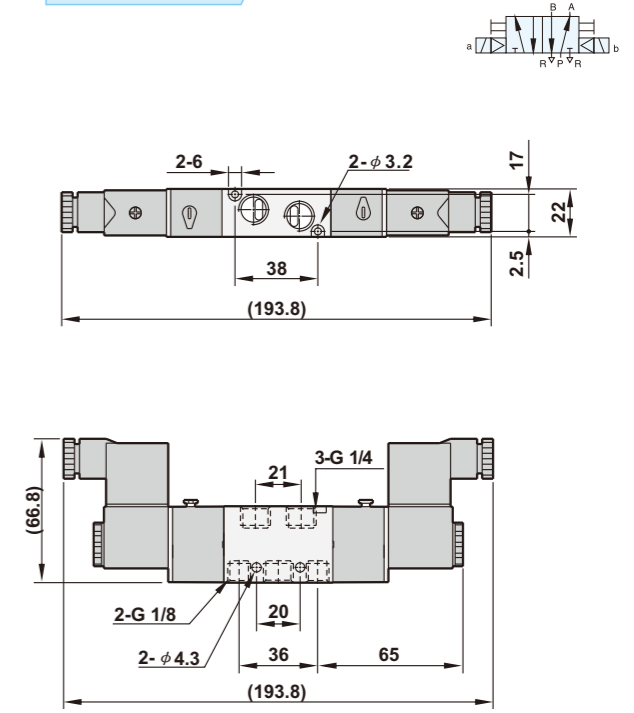
Model	E-BM520-02-S E-BM520-02-D	E-BM530-02-D	E-BM520-03-S E-BM520-03-D	E-BM530-03-D	E-BM520-04-S E-BM520-04-D	E-BM530-04-D
Port size	1/4", 1/8" (Exhaust ports)		3/8", 1/4" (Exhaust ports)		1/2"	
Body material	Aluminum alloy					
Fluid	Compressed air					
Acting	Internal pilot					
Effective area	18mm ²	14mm ²	30mm ²	18mm ²	50mm ²	30mm ²
Operating pressure range	2~8 kgf/cm ²					
Proof pressure	9.9 kgf/cm ²					
Ambient temperature	-10℃ ~ 60℃					
Duty cycle	100% ED					
Coil type	DIN (Standard)					
Protection class	IP65 (DIN 40 050)					
Insulation class	F					
Voltage tolerance	±10%					
Standard voltage	12VDC, 24VDC					
Net weight	235g(335g)	445g	410g(500g)	700g	590g(720g)	770g

Dimensions

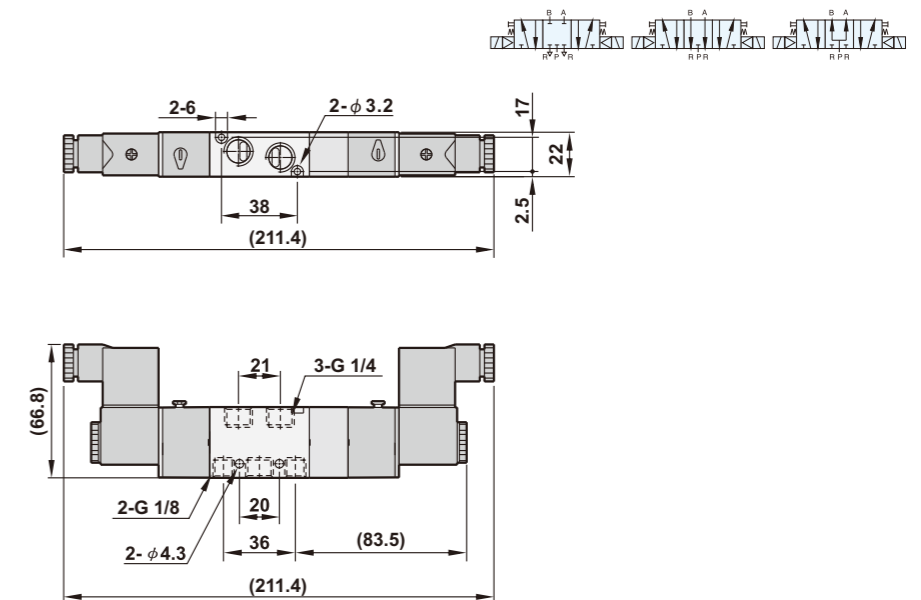
E-BM520-02-S



E-BM520-02-D

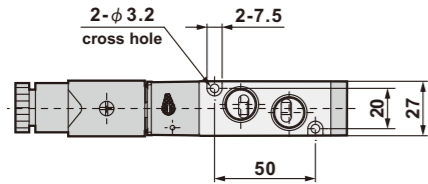
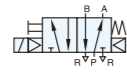


E-BM530(X)(Y)-02-D

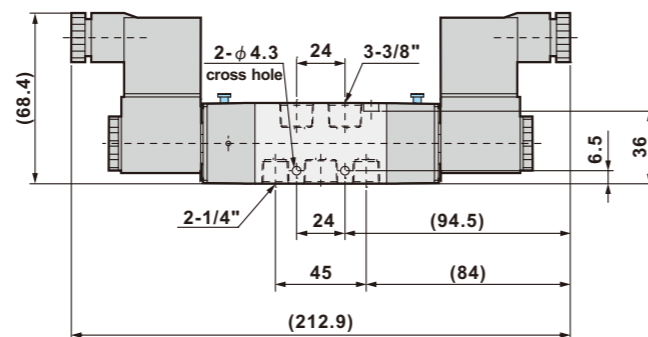
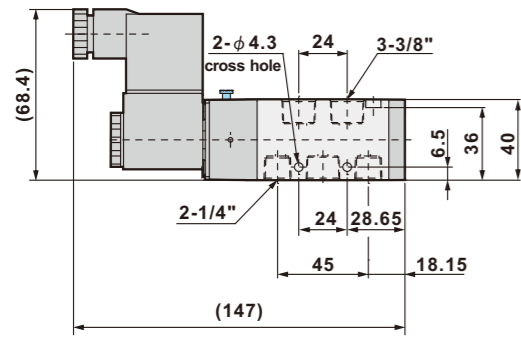
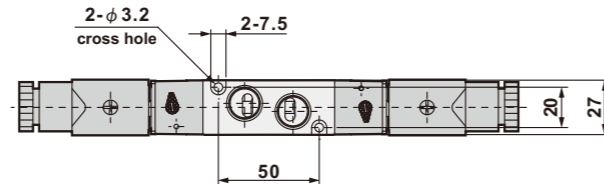
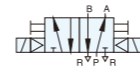


■ Dimensions

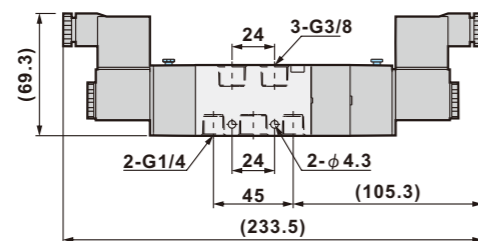
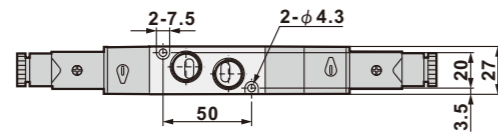
E-BM520-03-S



E-BM520-03-D

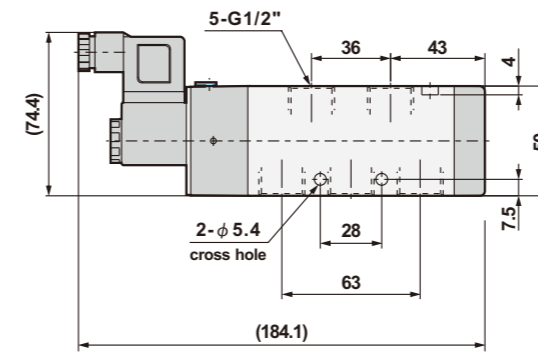
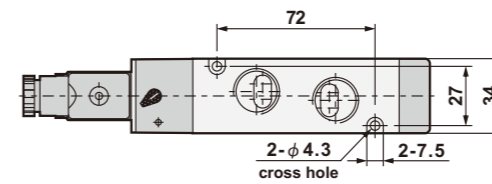
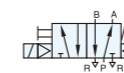


E-BM530(X)(Y)-03-D

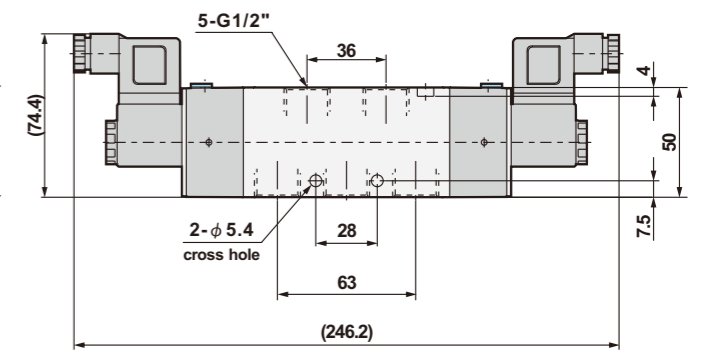
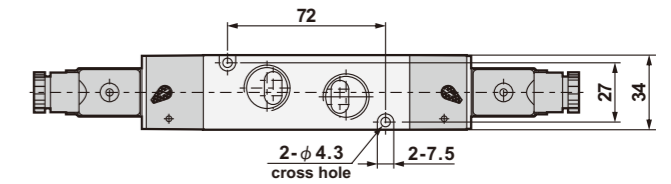
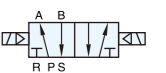


■ Dimensions

E-BM520-04-S



E-BM520-04-D



E-BM530(X)(Y)-04-D

