

Features

1. Built in magnet for sensor use.
2. Caps are rolled and polished, which provides stable quality.
3. Stainless steel SUS304 barrel provides stable movement and features high quality and durable life.
4. Stainless steel SUS304 barrel features corrosion resistance and strongly mechanical strength.



How to order

<b>PMA</b>	<b>32</b>	<b>B50 - C</b>	<b>-</b>	<b>SF</b>	<b>1 -</b>	<b>FA -</b>	<b>Y -</b>	<b>S</b>
Type	Bore size	Stroke	Cushion	Sensor type	Number of sensor	Mounting parts	Rod end joint	Rod material
PMA :Standard type	16 : φ16		Blank :W/O cushion	Blank :W/O sensor	1 pc	Blank :W/O mounting parts	Blank :W/O rod end joint	Blank :S45C
PMAC :Boss-cut	20 : φ20		C :W/I cushion	SF :LED in front	2 pcs	FA :Front flange (φ16~φ25)	Y :Double knuckle joint (φ16~φ40)	S :SUS304
PMAD :Double rod	25 : φ25					FB :Rear flange (φ16~φ25)	I :Single knuckle joint (φ16~φ40)	
PMAA :Stroke adjustable 25mm	32 : φ32					CB :Female clevis (φ16~φ32)	P :Eyebolt floating joint (φ16~φ40)	
PMAB :Stroke adjustable 50mm	40 : φ40					LB :Foot mounting (φ16~φ40)	T :Basic floating joint (φ16~φ63)	
	50 : φ50						L :Axial foot type floating joint (φ20~φ63)	
	63 : φ63						F :Flange type floating joint (φ20~φ63)	



\*Please refer to P3-185~P3-186

How to order mounting parts

<b>ZIPC</b>	<b>FA -</b>	<b>20</b>
PMA series	Mounting parts	Bore size
	FA :Front flange (φ16~φ25)	16 : φ16
	FB :Rear flange (φ16~φ25)	20 : φ20
	CB :Female clevis (φ16~φ32)	25 : φ25
	LB :Foot mounting (φ16~φ40)	32 : φ32
		40 : φ40
		50 : φ50
		63 : φ63

\*Please refer to P3-61

How to order rod end joints

<b>ZNF</b>	<b>Y -</b>	<b>M8</b>
	Rod end joint	Thread size
	Y :Double knuckle joint (φ16~φ40)	M6 :M6xP1.0 (PMA16)
	I :Single knuckle joint (φ16~φ40)	M8 :M8xP1.25 (PMA20)
	P :Eyebolt floating joint (φ16~φ40)	M10 :M10xP1.25 (PMA25, 32)
	T :Basic floating joint (φ16~φ63)	M12 :M12xP1.25 (PMA40)
	L :Axial foot type floating joint (φ20~φ63)	M14 :M14xP1.5 (PMA50, 63)
	F :Flange type floating joint (φ20~φ63)	

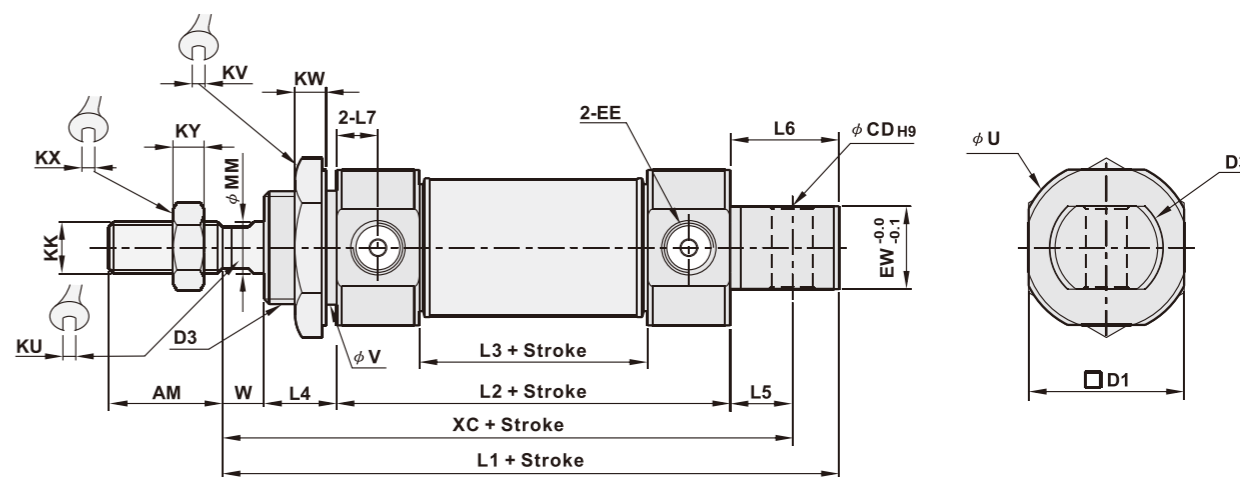
\*Please refer to P3-183~P3-184

Specifications

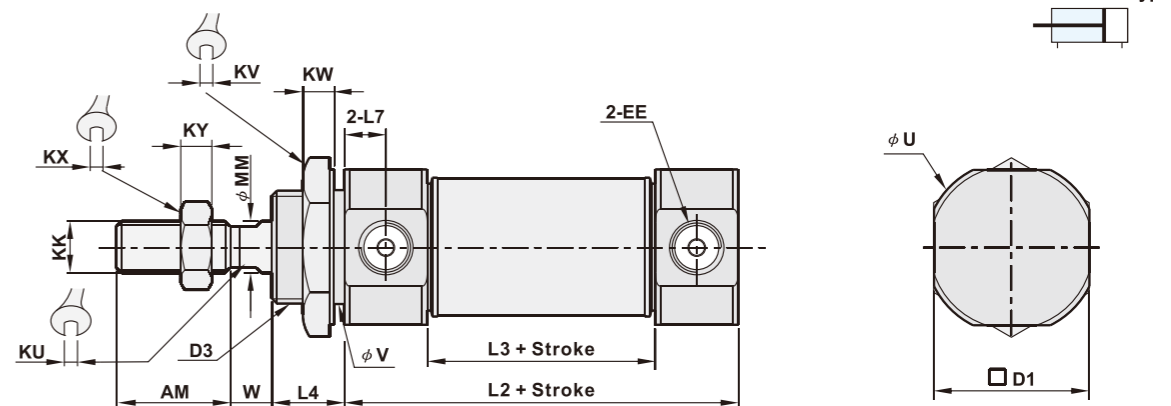
<b>Bore size</b>	<b>φ 16</b>	<b>φ 20</b>	<b>φ 25</b>	<b>φ 32</b>	<b>φ 40</b>	<b>φ 50</b>	<b>φ 63</b>
Port size	M5xP0.8		1/8"		1/4"		
Fluid	Compressed air						
Acting	Double acting						
Operating pressure range	1.5 ~ 8.5 kgf/cm <sup>2</sup>						
Max. operating pressure	9.5 kgf/cm <sup>2</sup>						
Barrel material	Stainless steel SUS304						
Magnet	Built-in						
Ambient temperature	-5°C ~ 60°C						
Piston speed	50~700mm/Sec						

Dimensions

PMA Standard integrated clevis type



PMAC Boss-cut type



(Unit: mm)

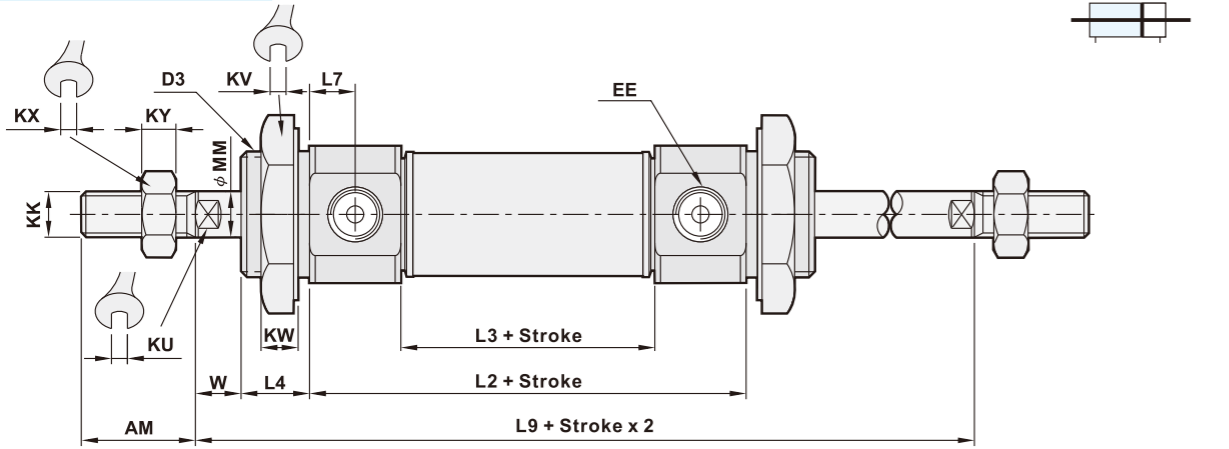
Bore size	AM	D1	CD	D3	L1	L2	L3	L4	L5	L6	L7
φ 16	16	18.3	φ 6	M16xP1.5	98	60	40	16	9	16	5
φ 20	20	24	φ 8	M22xP1.5	117	76	44	12	12	21	8
φ 25	22	30	φ 8	M22xP1.5	119	76	44	14	12	21	8
φ 32	22	34.5	φ 10	M24xP2.0	125	76	44	14	15	27	8
φ 40	24	42.5	φ 12	M30xP2.0	125	76	42.6	14	15	27	8.4

Bore size	KK	KU	KV	KW	KX	KY	MM	W	EW	XC	EE	U	V
φ 16	M6xP1.0	5	22	6	10	5	φ 6	6	12	91	M5xP0.8	φ 20	φ 16
φ 20	M8xP1.25	6	30	6	13	6	φ 8	8	16	108	G 1/8	φ 28	φ 22
φ 25	M10xP1.25	8	30	6	17	6	φ 10	8	16	110	G 1/8	φ 33.5	φ 22
φ 32	M10xP1.25	10	32	8	17	6	φ 12	8	16	113	G 1/8	φ 37.5	φ 24
φ 40	M12xP1.25	14	41	8	19	7	φ 16	8	20	113	G 1/8	φ 46.5	φ 30

■ Dimensions

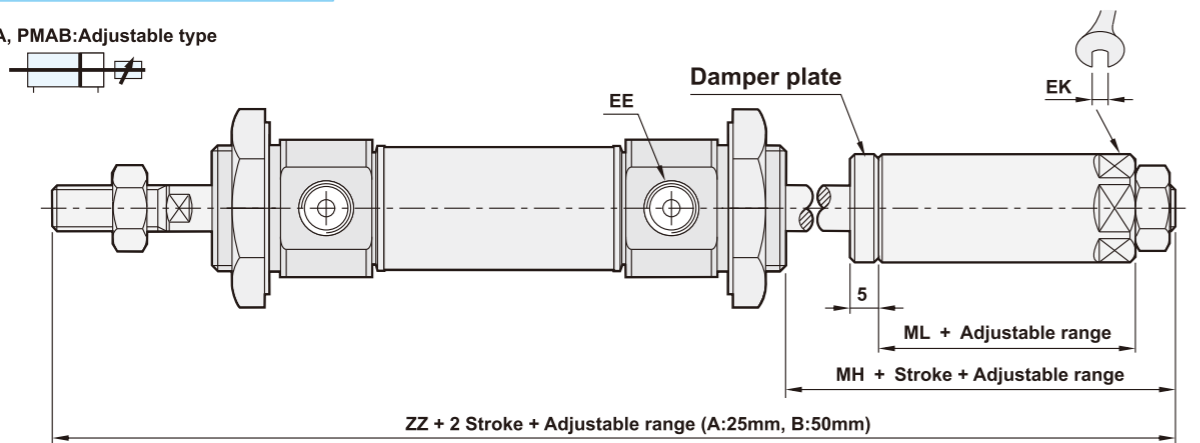
PMAD Double rod type

PMAD:Double rod type



PMAA, PMAB Adjustable type

PMAA, PMAB:Adjustable type



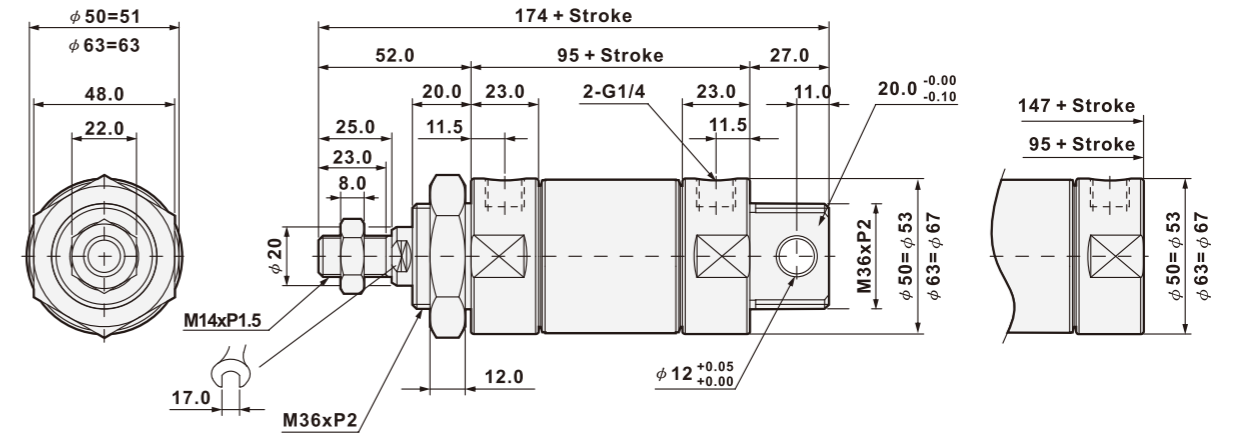
(Unit: mm)

Bore size	AM	D3	L2	L3	L4	L7	L9	EE	KU	KV
φ 16	16	M16xP1.5	60	40	16	5	104	M5xP0.8	5	22
φ 20	20	M22xP1.5	76	44	12	8	116	G1/8	6	30
φ 25	22	M22xP1.5	76	44	14	8	120	G1/8	8	30
φ 32	22	M24xP2.0	76	44	14	8	120	G1/8	10	32
φ 40	24	M30xP2.0	76	46.2	14	8.4	120	G1/8	14	41

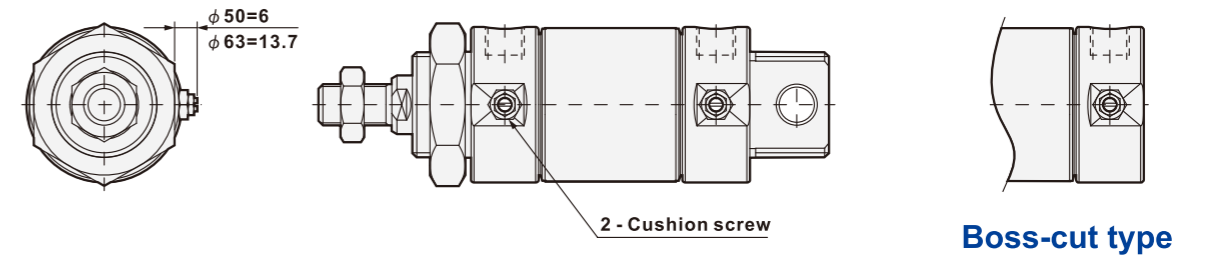
Bore size	KW	KX	KY	MM	W	KK	ZZ	MH	ML	KE
φ 16	6	10	5	φ 6	6	M6xP1.0	145	31	20	12
φ 20	6	13	6	φ 8	8	M8xP1.25	159	31	20	17
φ 25	6	17	6	φ 10	8	M10xP1.25	165	31	20	17
φ 32	8	17	6	φ 12	8	M10xP1.25	167	33	22	22
φ 40	8	19	7	φ 16	8	M12xP1.25	171	35	22	27

■ Dimensions

Standard type (φ 50~φ 63)



With Cushion (φ 50~φ 63)



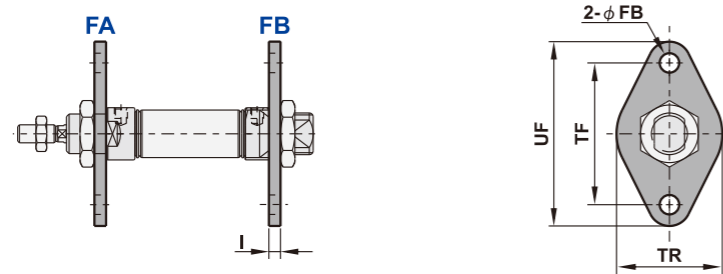
■ Stroke table

Bore size	Acting	Standard stroke(mm)	Max. Standard stroke(mm)
φ 16 ~ φ 63	Double acting	5 ~ 500	900

Note: Please contact our sales for non-standard stroke.

Dimension of mounting parts

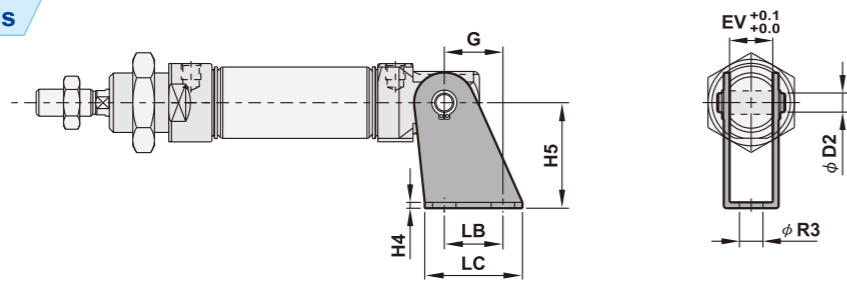
FA, FB Front & Rear flange



(Unit: mm)

Bore size	TF	TR	UF	UR	I	FB	Bore size	TF	TR	UF	UR	I	FB
φ 16	40	--	52	30	3	φ 5.5	φ 25	50	--	66	40	3	φ 6.5
φ 20	50	--	66	40	3	φ 6.5							

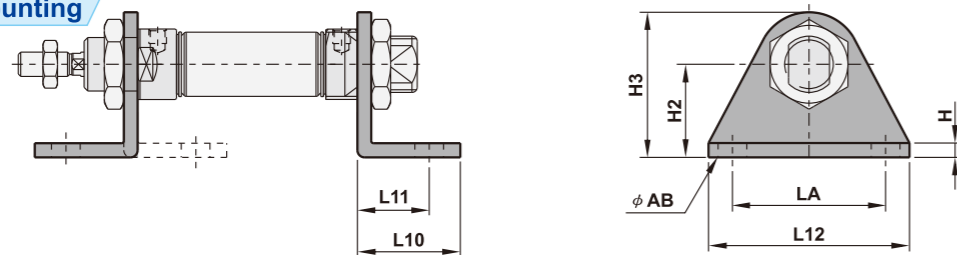
CB Female clevis



(Unit: mm)

Bore size	LB	LC	EV	H4	H5	G	D2	R3	Bore size	LB	LC	EV	H4	H5	G	D2	R3
φ 16	15	25	12	3	27	15	φ 6 <sup>+0.03</sup> / <sub>+0.0</sub>	φ 6	φ 25	20	32	16	3	30	18.5	φ 8 <sup>+0.04</sup> / <sub>+0.0</sub>	φ 7
φ 20	20	32	16	3	30	18.5	φ 8 <sup>+0.04</sup> / <sub>+0.0</sub>	φ 7	φ 32	25	40	22	3	40	22.5	φ 10 <sup>+0.04</sup> / <sub>+0.0</sub>	φ 9

LB Foot mounting



(Unit: mm)

Bore size	L10	L11	L12	LA	H	H2	H3	AB	Bore size	L10	L11	L12	LA	H	H2	H3	AB
φ 16	20.5	14	42	32	3	20	33	φ 6	φ 32	25	18	64	50	3.5	28	48	φ 7
φ 20	26	17	54	40	3	25	45	φ 7	φ 40	30	20	74	54	4	31.5	60	φ 7
φ 25	26	17	54	40	3	25	45	φ 7									

Memo...

Handwriting area with horizontal dashed lines.

