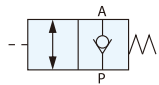


Symbol



Features

1. Speed control valve and Pilot check valve are combined.
2. Pilot acting, control the piston of cylinder to stop moving instantly. Install the product directly on the air ports of cylinder.

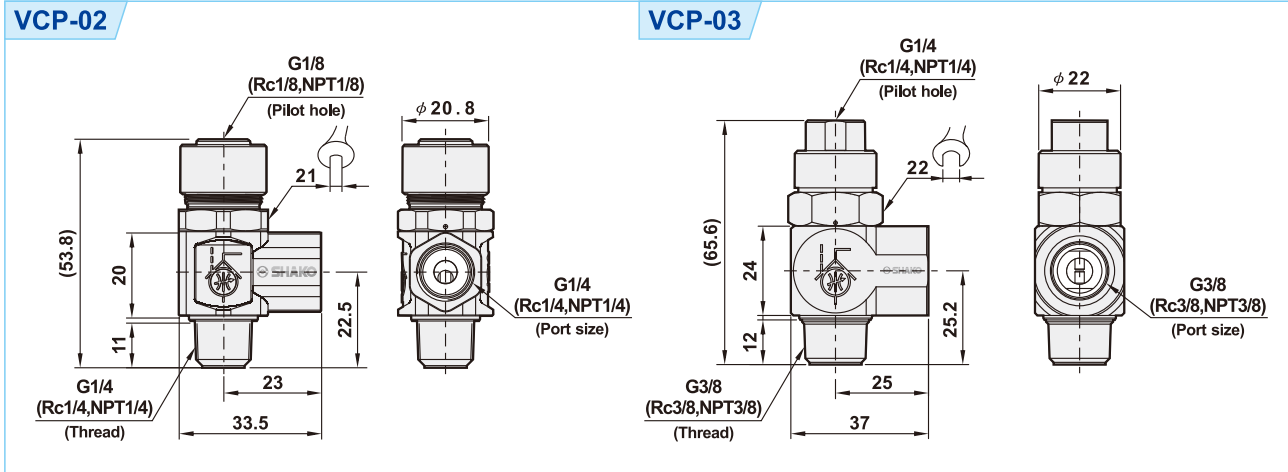
How to order

| VCP | 02 | N |
|-------------------|-----------|-----------|
| Pilot Check Valve | Port size | Thread |
| | 02 : 1/4" | Blank : G |
| | 03 : 3/8" | N : NPT |
| | | R : Rc |

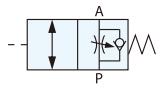
Specifications

| Model | VCP-02 | VCP-03 |
|--------------------------|--|-------------------|
| Port size | 1/4" | 3/8" |
| Body material | Zin alloy | Brass |
| Fluid | Compressed air | |
| Sectional area | 14mm ² | 39mm ² |
| Operating pressure range | 1 ~ 10 kgf/cm ² | |
| Pilot pressure | 1/2 x Operating pressure (Min:over 1kgf/ cm ²) | |
| Proof pressure | 15 kgf/cm ² | |
| Ambient temperature | -5℃ ~ 60℃ | |
| Net weight | 90g | 102g |

Dimensions



Symbol



Features

1. Speed control valve and Pilot check valve are combined.
2. Speed control valve can be installed directly on the cylinder ports to increase the stability of cylinder speed control, which is different from the general way of speed control from the solenoid valve at the other end.

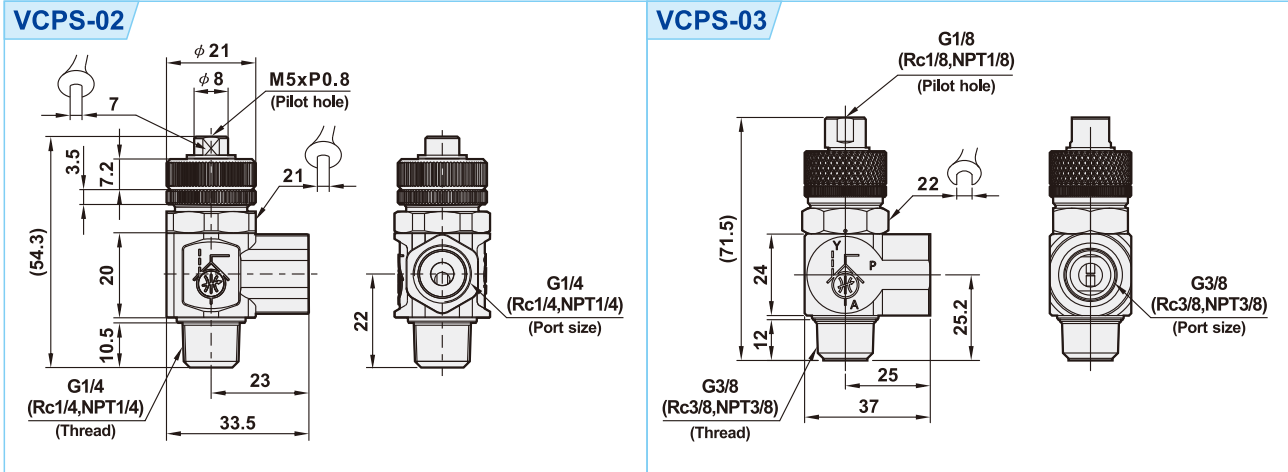
How to order

| VCPS | 02 | N |
|---------------------|-----------|-----------|
| Speed control valve | Port size | Thread |
| | 02 : 1/4" | Blank : G |
| | 03 : 3/8" | N : NPT |
| | | R : Rc |

Specifications

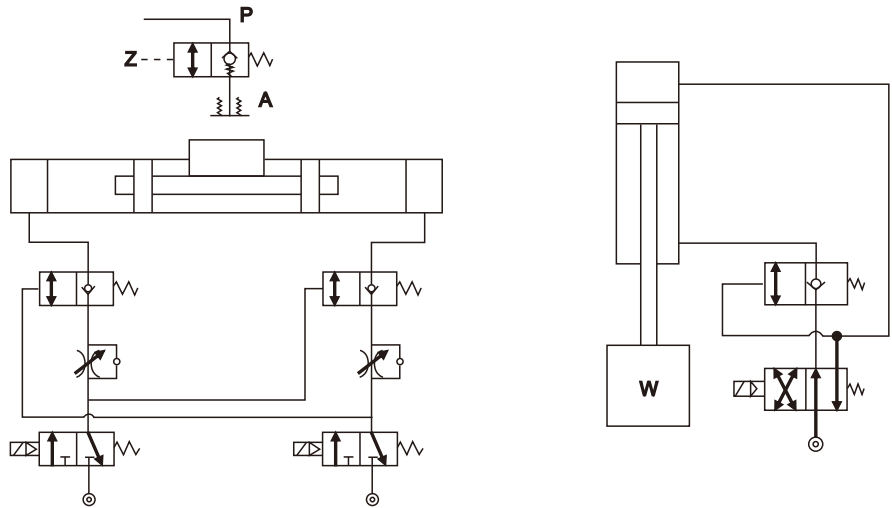
| Model | VCPS-02 | VCPS-03 |
|--------------------------|--|-------------------|
| Port size | 1/4" | 3/8" |
| Body material | Zin alloy | Brass |
| Fluid | Compressed air | |
| Sectional area | 14mm ² | 39mm ² |
| Operating pressure range | 1 ~ 10 kgf/cm ² | |
| Pilot pressure | 1/2 x Operating pressure (Min:over 1kgf/ cm ²) | |
| Proof pressure | 15 kgf/cm ² | |
| Ambient temperature | -5℃ ~ 60℃ | |
| Net weight | 100g | 119g |

Dimensions



Application

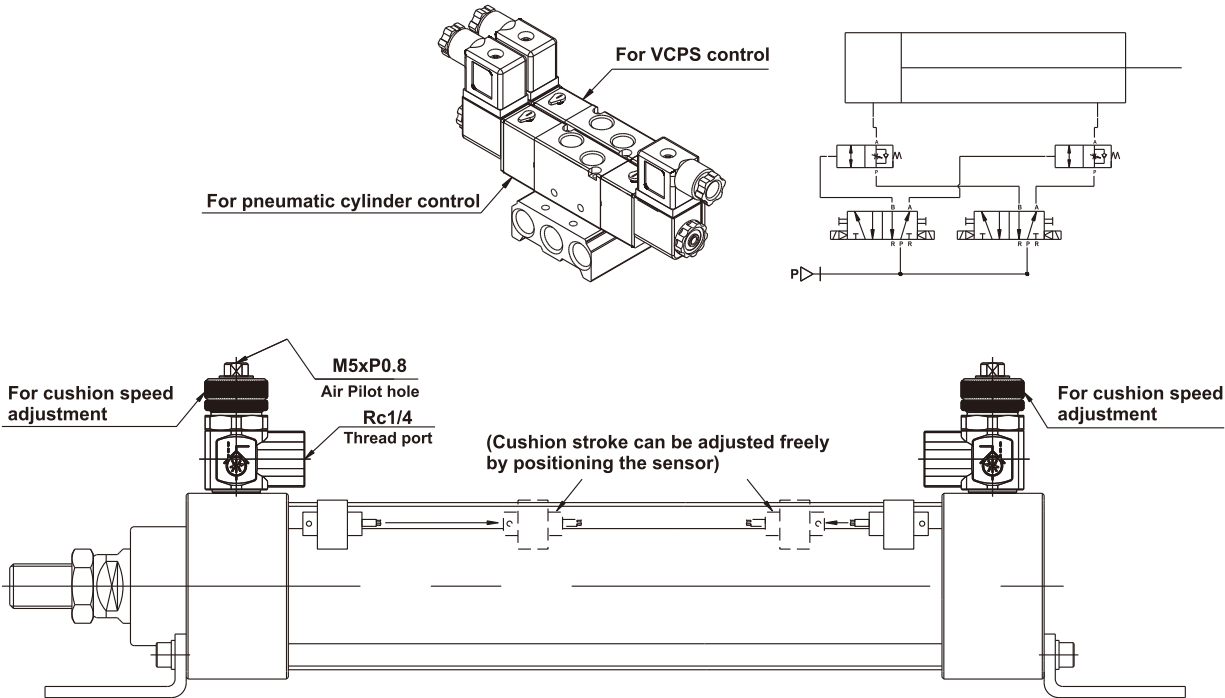
VCP



Memo...

VCPS

- 1.The cushion stroke and cushion speed for pneumatic cylinder can be adjusted freely by using VCPS speed control valve, solenoid valve and sensor.
- 2.When the magnetic piston in pneumatic cylinder is moving and detecting the sensor, the signal will be transmitted to the solenoid valve to open and close the pilot hole on VCPS speed control valve for requested cushion stroke and cushion speed control for pneumatic cylinder.



| |
|----------------|
| Control Valves |
| Others |
| SV |
| S |
| SCP |
| C |
| VCP |
| VCPS |
| Q |
| ST |
| VV |