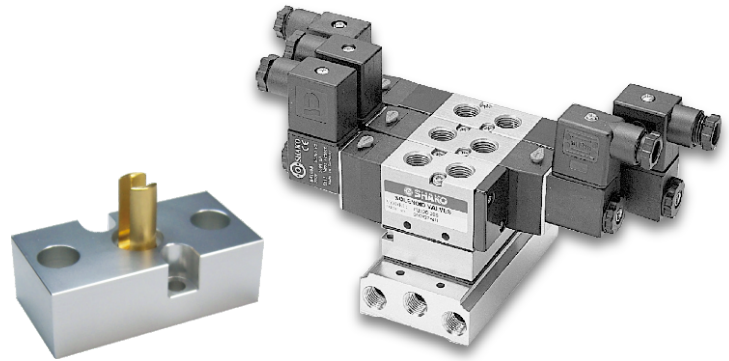


■ Features

1. The shut-off block allows a valve to be removed without switching off other solenoid valves and air supply.
2. Apply to PU520-02, PU530-02(SOB52-02), PU521A(SOB52-M5) series.



■ How to order

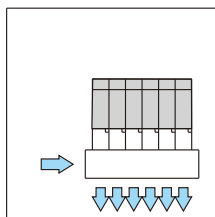
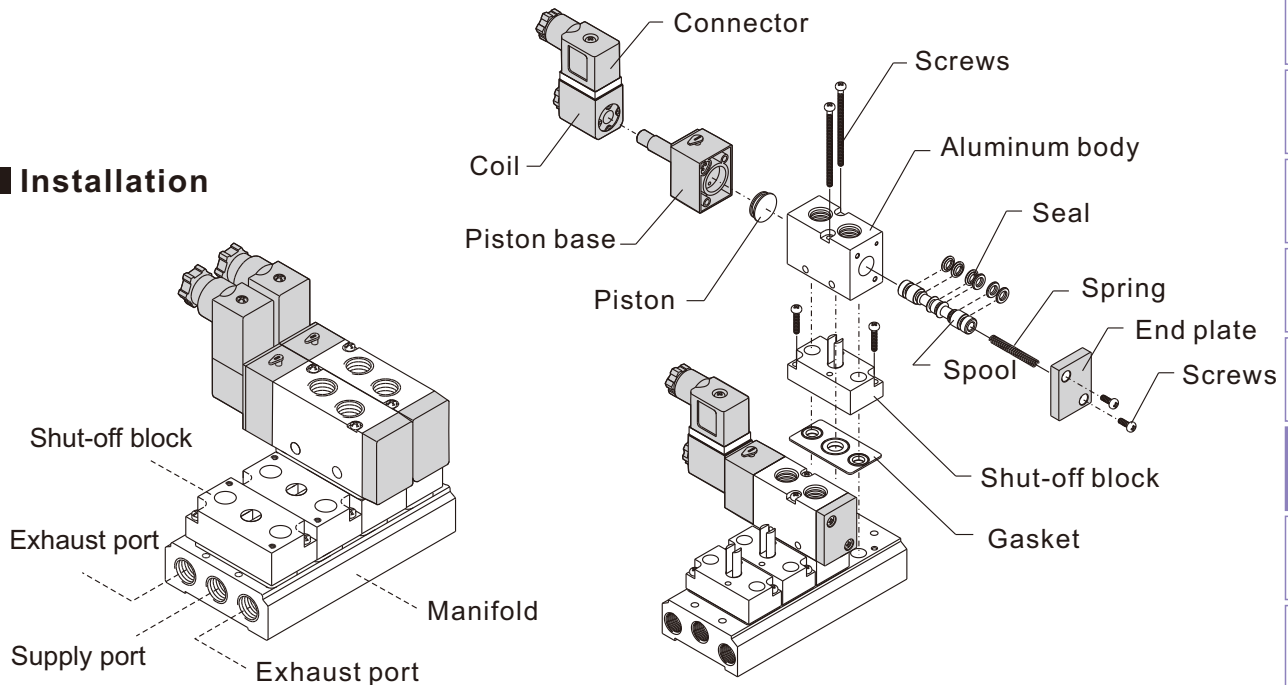
SOB52 - 02

Port size

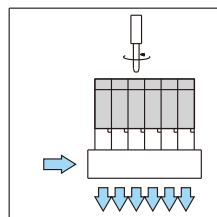
02 : 1/4" (PU520-02,PU530-02)

M5 : M5 (PU521A)

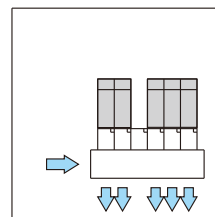
■ Installation



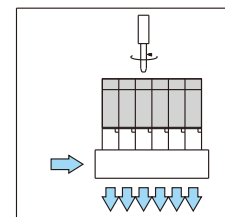
1. Select a solenoid valve needs to be removed.



2. Loosen retaining screws on the valve.



3. Remove the valve and shut-off block automatically cut off air supply and exhaust in the meantime.



4. Replace a new solenoid valve and shut-off block will reopen the ports and re-energize the new valve.