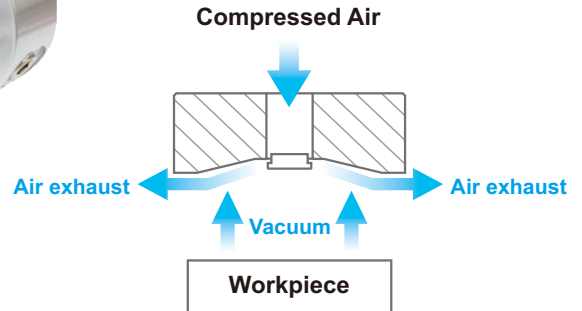


### Features

1. Workpiece gripping by compressed air without vacuum.
2. Non-contact suction to avoid fingerprint on workpiece.
3. Gripping for the workpiece with uneven surface or through holes is available.



### Function Diagram



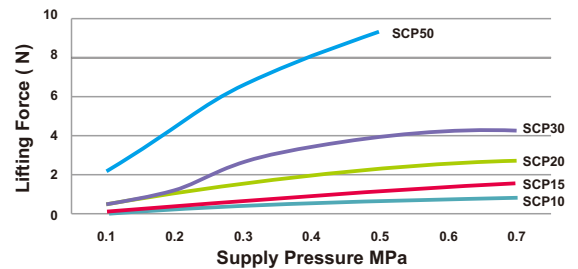
### Industrial Application

- Solar energy industry such as chips transferring.
- Food industry such as cooked or fresh food carrying.
- Paper and Printing industry, Printed circuit board industry.
- IT such as Smart Phone, Lens and Wafers carrying and transferring.

### How to order

<b>SCP</b>	<b>-</b>	<b>10</b>
<b>Non contact suction pad</b>		<b>Body diameter</b>
	<b>10</b>	: $\phi$ 10
	<b>15</b>	: $\phi$ 15
	<b>20</b>	: $\phi$ 20
	<b>30</b>	: $\phi$ 30
	<b>50</b>	: $\phi$ 50

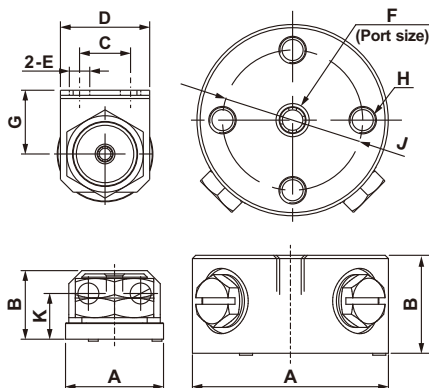
### Lifting Force Graph



### Specifications

Model	SCP-10	SCP-15	SCP-20	SCP-30	SCP-50
Port size	M3		M5		G1/8
Mounting hole	-		M3*3		M4*4
Plug	-		M5*1		G1/8*2
Fluid	Compressed air				
Operating pressure range	0.1 ~ 0.7MPa				
Ambient temperature	-20°C ~ 60°C				
Body material	Aluminum alloy				

### Dimensions



Model	A	B	C	D	E	F	G	H	J	K
SCP-10	$\phi$ 10	10	10	14	$\phi$ 2.2	M3	7	-	-	6.5
SCP-15	$\phi$ 15	10.5	8	14	$\phi$ 3.2	M3	10	-	-	7
SCP-20	$\phi$ 20	15	-	-	-	M5	-	M3	$\phi$ 15	-
SCP-30	$\phi$ 30	15	-	-	-	M5	-	M4	$\phi$ 22	-
SCP-50	$\phi$ 50	17.2	-	-	-	G1/8	-	M4	$\phi$ 40	-