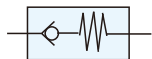


■ Symbol



■ Features

1. Check ball mechanism allows fluid flowing in one direction only.
2. Full stainless steel SUS316L material
3. Different seals for option.
4. Operating pressure range 0.3~45kgf/cm²



*Not available for liquid over 20cst.

■ How to order

SC	—	01	N	E
SUS316L Check Valves		Port size	Thread	Seal
		01 : 1/8"	Blank : G	Blank : VITON
		02 : 1/4"	N : NPT	E : EPDM
		03 : 3/8"		H : HNBR
		04 : 1/2"		B : NBR

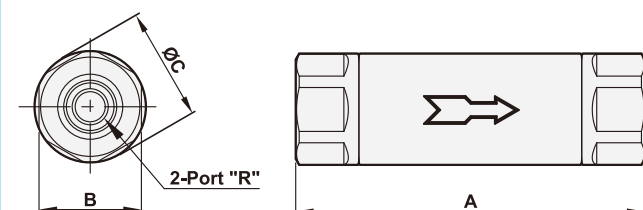
■ Specifications

Model	SC-01	SC-02	SC-03	SC-04
Port size	1/8"	1/4"	3/8"	1/2"
Body material	SUS316L			
Fluid	Compressed air 、 Nitrogen 、 H ₂ 、 Liquid			
Sectional area	28mm ²		154mm ²	
Operating pressure range	0.3 ~ 45 kgf/cm ²			
Max. inlet pressure	45 kgf/cm ²			
Ambient temperature	-10℃ ~ 80℃			
Net weight	88.5g	78.9g	272.8g	242.8g

■ Dimensions

(Unit: mm)

SC-01~04



Model	SC-01	SC-02	SC-03	SC-04
R	1/8"	1/4"	3/8"	1/2"
A	58	58	76	76
B	17	17	27	27
ØC	18.5	18.5	29.5	29.5