

■ Features

1. From medium to compact Size, variety of flow rate.
2. Manual override with lock design for easy operation.
3. Anodized aluminum body with special machining inner slot, low friction, strict quality control provides a long durability.
4. Coil nut is available, please refer to page 5-1, 5-2.



■ How to order

BM320	N	—	02	N	—	S	2	L	E1
3/2 Way	Acting style		Port size	Thread	Solenoid	Voltage	Led		Coil type
	Blank : Normally closed N : Normally open		01 : 1/8" 02 : 1/4"	Blank : G N : NPT R : Rc	S : Single solenoid	1 : 110VAC 2 : 220VAC 6 : 24VAC 7 : 12VDC 9 : 24VDC	Blank : W/O LED L : W/I LED		For 1/8" Blank : Lead wire D : DIN For 1/4" Blank : DIN F : Lead wire E1 : EX-proof 22mm width E2 : EX-proof 30mm width E3 : EX-proof CSA standard

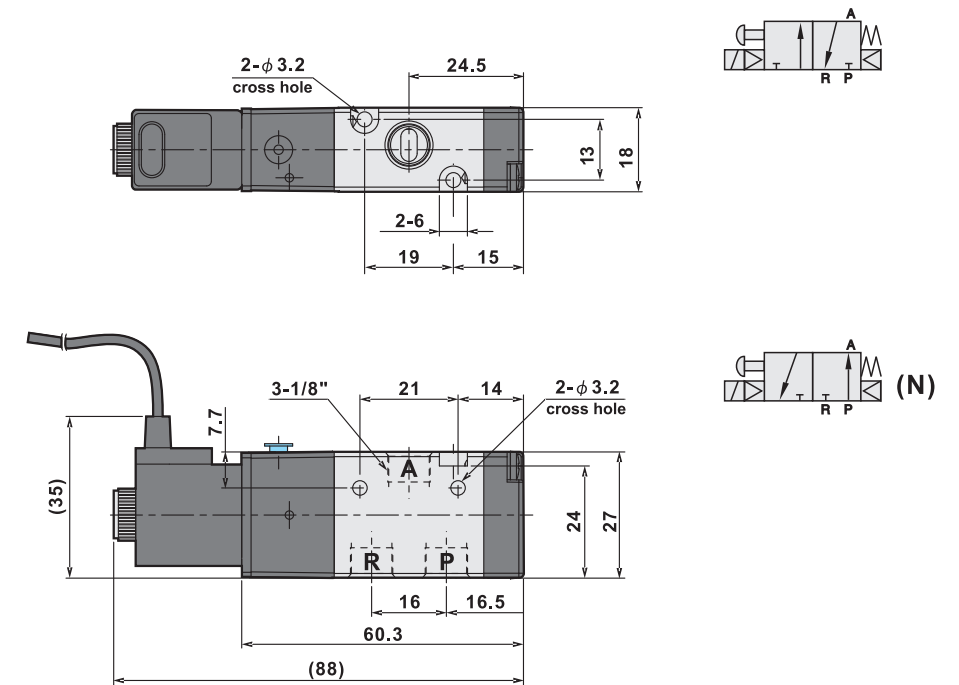
*Ex-proof coil is available, please refer to page 5-10.

■ Specifications

Model	BM320(N)-01	BM320(N)-02
Port size	1/8"	1/4"
Body material	Aluminum alloy	
Fluid	Compressed air	
Effective area	12mm ²	16mm ²
Acting	Internal pilot	
Operating pressure range	1.5~8 kgf/cm ²	
Proof pressure	9.9 kgf/cm ²	
Ambient temperature	-10℃ ~ 60℃	
Duty cycle	100% ED	
Coil type	DIN (Standard)	
Protection class	IP65 (DIN 40 050)	
Insulation class	F	
Voltage tolerance	±10%	
Standard voltage	220VAC, 110VAC, 24VDC (The other voltage is optional)	
Net weight	115g	180g

■ Dimensions

BM320(N)-01



BM320(N)-02

