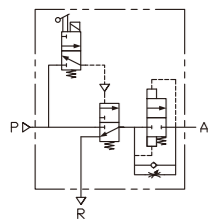


### Symbol



### Features

The function of soft start valve is to build up pneumatic system in safety and protection. Please input air supply to P port on soft start valve, when the coil on soft start valve is energized, soft start valve is open and a little air controlled by internal throttle valve output from A port to make air pressure increase slowly in pneumatic system. While output pressure is equal to 50% of input pressure, soft start valve is fully open in highest flow rate. When the coil on soft start valve is de-energized, P port is closed and the air return to R port through internal check valve for exhaust, the pressure in the system is down to zero to protect whole system in safety.



### How to order

VSS	—	02	N	—	S2	L	F
Soft Start Valve	Port size	Thread	Voltage	Led	Coil type		
	02 : 1/4"	Blank : G N : NPT	S1 : 110VAC S2 : 220VAC S6 : 24VAC S7 : 12VDC S9 : 24VDC	Blank : W/O LED L : W/I LED	Blank : DIN F : Lead wire E1 : EX-proof 22mm width E3 : EX-proof CSA standard		

### Specifications

Model	VSS-02	VSS-03	VSS-04
Port size	1/4"	3/8"	1/2"
Fluid	Compressed air		
Acting	Manual		
Operating pressure range	0.25 ~ 9 kgf/cm <sup>2</sup>		
Proof pressure	15 kgf/cm <sup>2</sup>		
Exhaust port size	Rc3/8		
Ambient temperature	-10°C ~ 60°C		
Duty cycle	100% ED		
Coil type	DIN (Standard)		
Protection class	IP65 (DIN 40 050)		
Insulation class	F		
Voltage tolerance	±10%		
Standard voltage	220VAC, 110VAC, 24VDC(The other voltage is optional)		

### Dimensions

#### VSS-02, 03, 04

