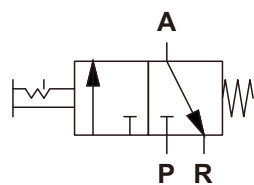


Symbol



Features

1. Modular design for connection with UC series FRL.
2. Working state of the valve can be verified by visible mark(EXH./SUP.).
3. Identical with OSHA.

OSHA regulation about installation standard for users:
 When the worker repair and maintain machinery, shut-off valve can exhaust residual pressure while air supply is shut down. In such repairing or maintaining works, the shut-off valve operated by other careless people may lead to downstream pipe pressurized and make cylinder or other machines working accidentally, it will cause the worker injured. Therefore, if shut-off valve is used for repairing or maintaining works, it should be locked to prevent the worker injured from accidental operation by other people.

How to order

VHT - 02 N		
Shut-off Valve	Port size	Thread
	02 : 1/4"	Blank : G
	03 : 3/8"	N : NPT
	04 : 1/2"	

Specifications

Model	VHT-02	VHT-03	VHT-04
Port size	1/4"	3/8"	1/2"
Fluid	Compressed air		
Acting	Manual		
Operating pressure range	0 ~ 9 kgf/cm ²		
Proof pressure	15 kgf/cm ²		
Ambient temperature	-20℃ ~ 70℃		
Manual angle	90°		
Exhaust port size	Rc3/8		

Dimensions

VHT-02, 03, 04

