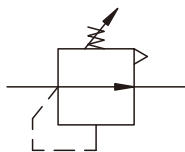


Miniature Safety Valve (Pressure Release Valve)

Symbol



Features

1. Available to set up releasing pressure 0.15~7kgf/cm².
2. When inlet pressure is more than setting pressure, the pressure release from outlet.
3. Diaphragm design provides more accurate and easier pressure setting.
4. Panel mounting is available.



How to order

PR200	—	02	N	B	G
Miniature Safety Valve (Pressure Release Valve)		Port size	Thread	Mounting bracket	Pressure gauge
		01:1/8"	Blank:G	Blank:W/O bracket	Blank:W/O gauge
		02:1/4"	N:NPT	B:W/I bracket	G:W/I gauge

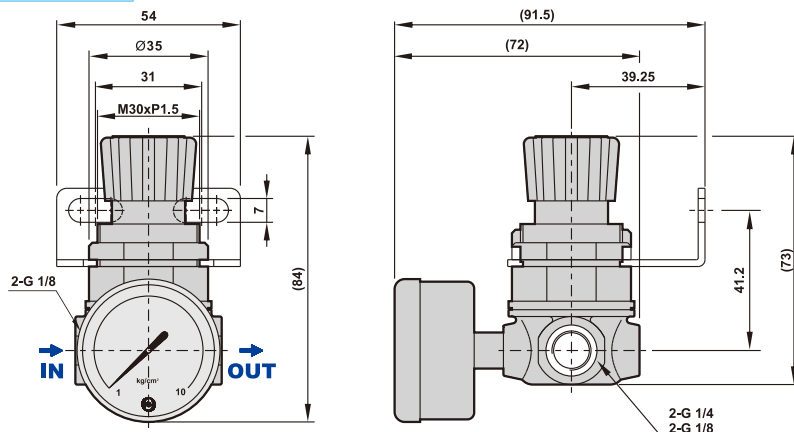
*For port size with Rc thread, please contact your sales representative.

Specifications

Model	PR200
Port size	1/8", 1/4"
Fluid	Compressed air
Regulator construction	Diaphragm
Body material	Aluminum die-cast
Operating pressure range	0.15 ~ 7 kgf/cm ²
Max. inlet pressure	12 kgf/cm ²
Max. flow rate l/min (ANR)	1500
Ambient temperature	-10°C ~ 60°C
Net weight	205g
Accessories	Plug x2
Option	Pressure gauge, Mounting bracket set

Dimensions

PR200-01, 02



How to set up

1. Turn the knob on safety valve clockwise until safety valve closed.
2. Adjust pressure regulator in front to set up requested pressure.
3. Turn the knob on safety valve counter-clockwise until the pressure start releasing from outlet, which means the setting is completed.